

A close-up photograph of a handcraft project on a rustic wooden surface. The project involves a wooden spindle with a dark, polished wooden whorl at the bottom. A thick, white, woolen yarn is being spun around the spindle. The yarn is coiled in a large, loose loop on the left side of the frame. The wooden surface is weathered and textured, with strong shadows cast across it. The text 'modu lyss' is in the top right, and 'HANDCRAFT COLLECTION' is in the center.

modu  
lyss®

**HANDCRAFT  
COLLECTION**

# WHERE NATURE MEETS CRAFT.

Inspiration is all around us. All we have to do is look.  
And combine the most valuable impressions in  
one organic piece.

The story behind the Handcraft Collection is just that.  
Now, it's your turn **to be inspired.**

By true  
craftsmanship &  
thoughtful design...

By the latest  
fashion trends.



Styling: Lara Hutton. Photograph: Sharyn Cairns. Sea Art - An Aesthetic Convergence.  
Exhibition by Lara Hutton in collaboration with Jacqui Fink, Nov. 2013.

Or the enriching  
experience of travel.



**ECONYL** 100% regenerated yarn.



By the  
beauty of  
everyday life.

But the greatest source  
inspiration is nature.

Always there for us  
to discover  
something new.

And to leave us  
with beautiful memories.



Of the pebbles  
under your feet.

On the wood  
between your fingers.





# HANDCRAFT COLLECTION

Nature gives us so much to work with. Colours, shapes and patterns.  
But also, materials to construct everything we can dream of.

The **Handcraft Collection** brings together scraps and stitches of nature's tale. Invite the outside in with the collection's organic patterns and hues. A green inspiration for a tranquil atmosphere.  
Get away from the hustle and bustle of your busy workspace and enjoy the peace and quiet of the outdoor experience.

Leaf through this catalogue to discover the fragmented designs of **Moss**, **Leaf**, **Willow** and **Grind**. Parallel pieces of a pure puzzle.  
How will you put it together?



# MOSS.



*Of moss and  
motif.*

Nature is our richest source of textures. Some we cannot miss, for others we have to take a closer look. But beauty is often strongest in those small, easily overlooked parts of the natural world. Lean in, take a closer look: can you see it?

MOSS. *Of moss and motif.*



*Fern Moss.*



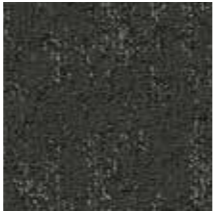
*Moss 961*



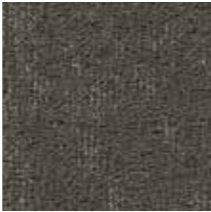
*Moss 668*



*Moss 130*



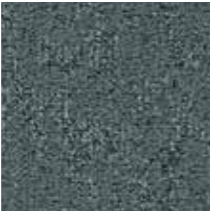
*Moss 983*



*Moss 850*



*Moss 352*



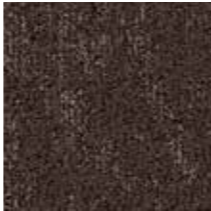
*Moss 586*



*Moss 592*



*Moss 966*



*Moss 810*



*Moss 592*



*Moss & Leaf 668*



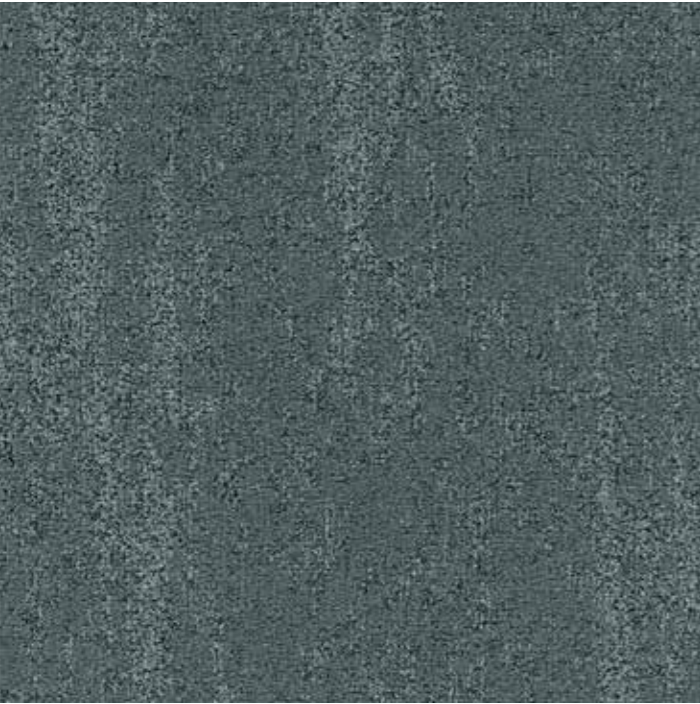
# LEAF.



*Which leaf  
would you pick up?*

The falling of leaves marks the changing of seasons. A fresh start, with new choices and new possibilities. Much like the fabulous colours of fall foliage, the designs in our Leaf Collection come in heaps of different hues.

LEAF. Which leaf would you pick up?



Leaf 586



Leaf 850



Leaf 352



Leaf 592



Leaf 966



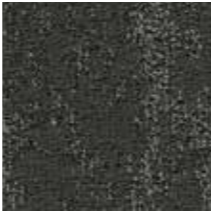
Leaf 810



Leaf 130



Leaf 983



Leaf 961



Leaf 668



Leaf 961



# WILLOW.



*Designed by nature.*

The natural bends of tree bark mimic life's unexpected twists and turns. A unique pattern that takes on various colours, textures and patterns. Find your way out of the maze, into Willow's warm and welcoming motif.

WILLOW. *Designed by nature.*



*Willow Bark.*



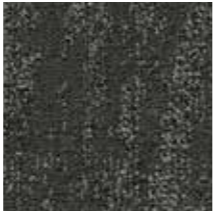
*Willow 668*



*Willow 130*



*Willow 983*



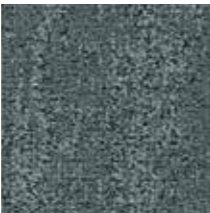
*Willow 961*



*Willow 850*



*Willow 352*



*Willow 586*



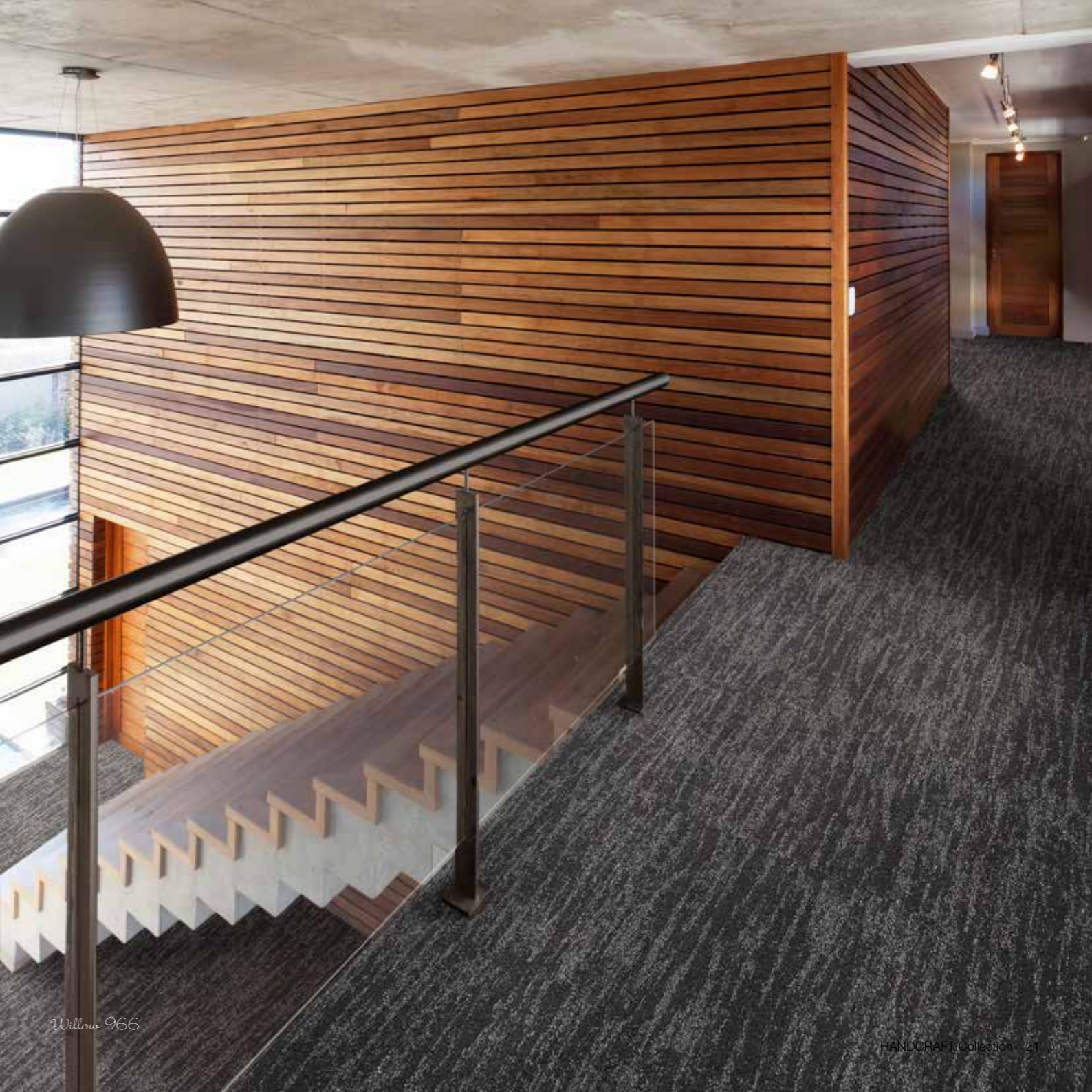
*Willow 592*



*Willow 966*



*Willow 810*



*Willow 966*





*Moss, Leaf & Willow 130*

Three different textures.  
There's no need to choose.  
Just mix & match.



*Moss, Leaf & Willow 983*

Flexibility first. Combine  
Handcraft's multiple textures  
into one organic piece.



Combine with  
**GRIND.**



*The road  
less traveled by.*

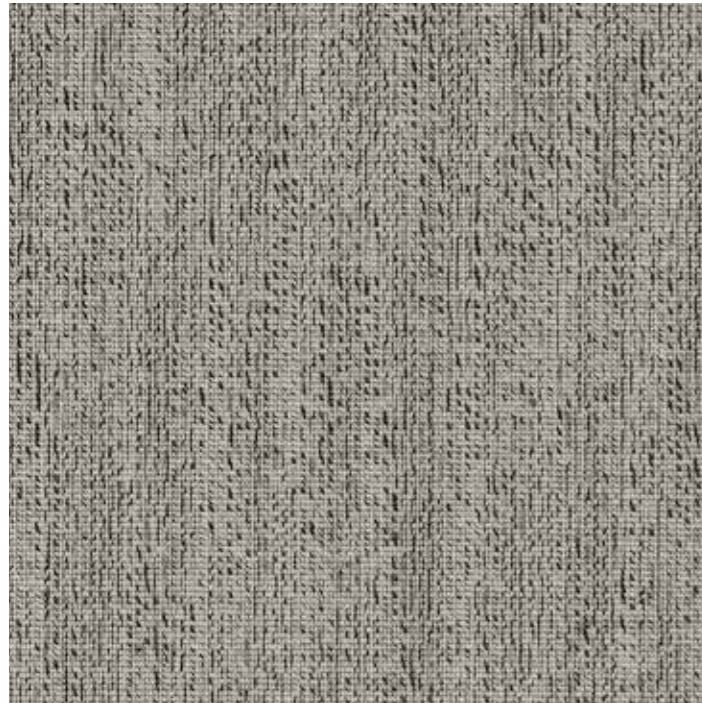
Unpaved roads are roads that lead you to the best views. Roads that are less traveled by. Roads for those of us who want to go the extra mile. They represent a different kind of travel. Because often, the journey trumps the destination.

# GRIND.

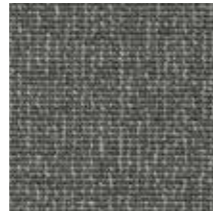
The road less traveled by.



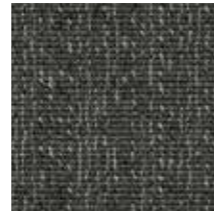
Crushed stones.



Grind 130



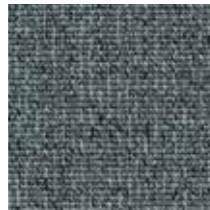
Grind 983



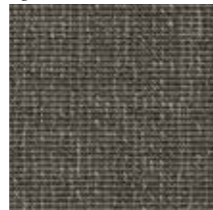
Grind 961



Grind 668



Grind 586



Grind 850



Grind 966



Grind 130



# FROM FISHING NETS TO TILES.

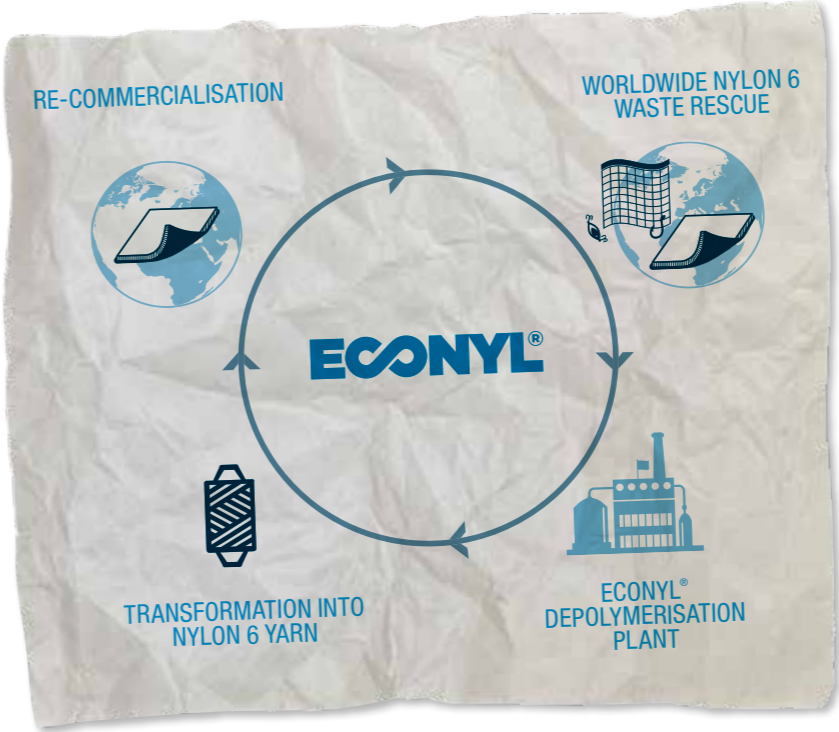
As part of our sustainable mission to reduce the Life Cycle Impact of each product, modulyss® decided to join **Healthy Seas®** as an associate partner member.

Healthy Seas® was set up to **protect our seas** by diving for abandoned fishing nets (known as ghost nets) that remain in the sea for centuries continuing to catch or injure marine life such as fish, dolphins, turtles and marine birds.

Healthy Seas® not only recovers the fishing nets but makes sure that they get recycled and regenerated into ECONYL® yarn by **Aquafil**, Europe's premier manufacturer of PA 6 carpet fibre.



*Joining Healthy Seas® as an associate partner member was a natural decision for modulyss®*



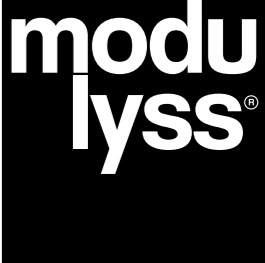
The ECONYL® Regeneration System is a **closed-loop process** which allows the transformation of nylon waste, such as fishing nets and other discarded materials, into first grade nylon used for the production of sustainable carpet products and other textiles.

modulyss® designed the Handcraft collection, using the high-grade **ECONYL® nylon yarn derived from recovered fishing nets and other waste materials** that are regenerated through the ECONYL® Regeneration System.

*A sustainable solution for a solid modulyss® future.*

Pairing the ECONYL® yarn with a **recycled primary and secondary backing** (back2back), is part of the sustainable choices we at modulyss® make every day.

Read all about our sustainable partnerships on [www.healthyseas.org](http://www.healthyseas.org), [www.econyl.com](http://www.econyl.com) or [www.modulyss.com](http://www.modulyss.com).





[www.modulyss.com](http://www.modulyss.com)